

PROGRAMMA MISCELAZIONE BAGNO
BATH MIXING PROGRAM
PROGRAMME DU MITIGEUR POUR LA SALLE DE BAIN
BAD-MISCHUNGSPROGRAMM
PROGRAMA MEZCLADORES BAÑO
ПРОГРАММА СМЕСИТЕЛЕЙ ДЛЯ ВАННОЙ
ΛΟΥΤΡΟ ΠΟΥ ΑΝΑΜΙΓΝΥΕΙ ΤΟ ΠΡΟΓΡΑΜΜΑ
浴室混水产品

Art. 01723

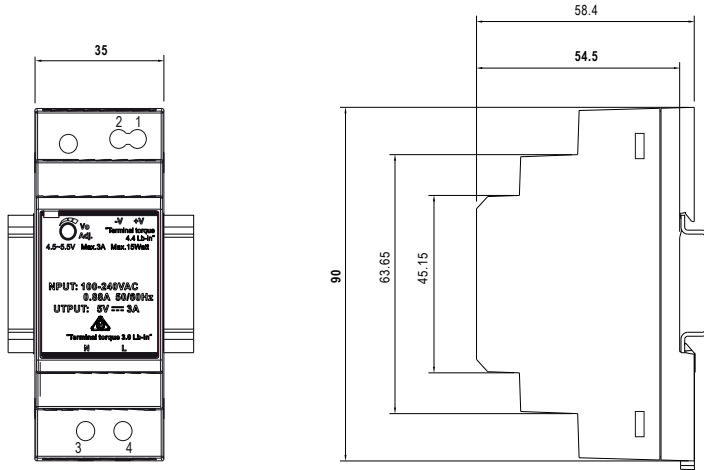
GESI THE
PRIVATE
WELLNESS
COMPANY®



GESI SpA
Parco Gessi - 13037 Serravalle Sesia
(Vercelli) ITALY
Tel. +39 0163 454111
Fax +39 0163 459273
www.gessi.com - gessi@gessi.it

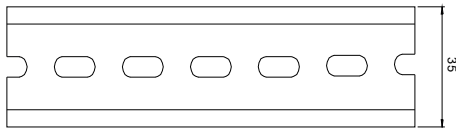
Mechanical Specification

(Unit: mm , tolerance ± 0.5 mm)



INPUT: 100-240VAC 50/60Hz

OUTPUT: 12V 2.0A



ADMISSIBLE DIN-RAIL: TS35/7.5 OR TS35/15

Terminal Pin No. Assignment

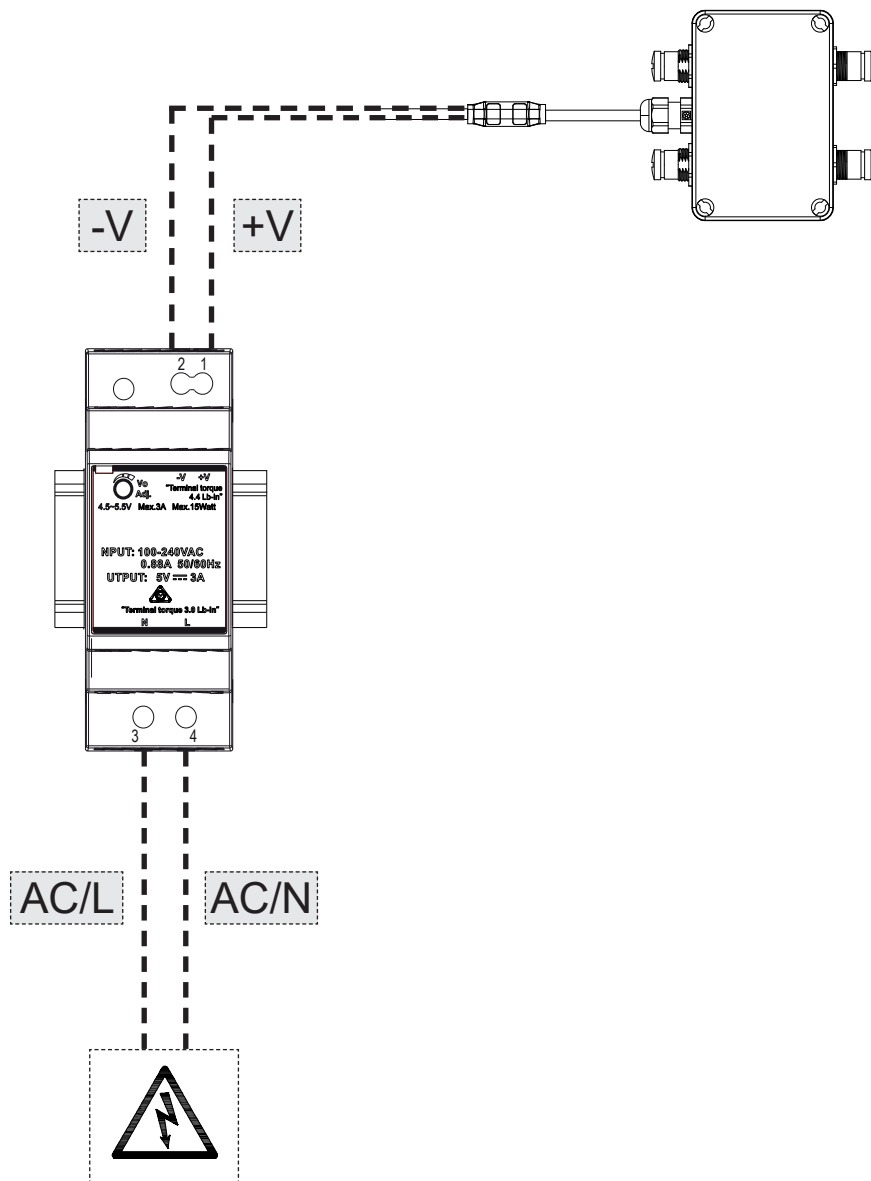
Pin No.	Assignment	Pin No.	Assignment
1	+V	3	AC/L
2	-V	4	AC/N

Introduction

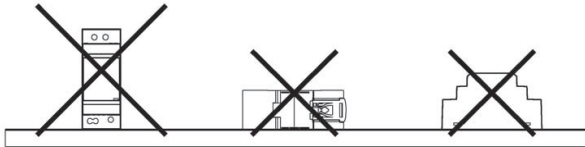
DIN rail power supply series with ultra slim appearance and full range AC input (100-240Vac). It conforms to EN6100-3-2, the norm the European Union regulates for harmonic current. With plastic housing, it can effectively prevent user from electric hazards. It can be mounted on a TS35 Standard DIN rail.

Installation

- (1) Always allow good ventilation clearances, 5mm left and right, 40mm above and 20mm below, around the unit in use to prevent it from overheating. Also a 10-15 cm clearance must be kept when the adjacent device is a heat source.



- (2) The appropriate mounting orientation for the unit is vertical, the input terminals at the bottom and output on the top. Mounting orientations other than that, such as upside down, horizontal, or table-top mounting, is not allowed.



- (3) Use copper wire only, and recommended wires are shown as below.

AWG	18	16	14
Rated Current of Equipment (Amp)	7	10	15
Cross-section of Lead(mm ²)	0.8	1.3	2.1
Note : Current each wire carries should be de-rated to 80% of the current suggested above when using 4-6 wires connected to the unit.			

Make sure that all strands of each stranded wire enter the terminal connection and the screw terminals are securely fixed to prevent poor contact. If the power supply possesses multi-output terminals, please make sure each contact is connected to wires to prevent too much current stress on a single contact.

- (4) Use wires that can withstand temperatures of at least 80°C, such as UL1007.
 (5) Recommended wire strapping length is 6mm (0.236").
 (6) Recommended screwdriver is 3mm, slotted type.
 (7) The recommended torque setting for terminals is shown as below.

	I/P	O/P
	3.4 kgf-cm (3.0 Lb-in)	5 kgf-cm (4.4 Lb-in)

- (8) Suggested fuse and maximum number of the product that can be connected to a circuit breaker at 230V are shown as below.

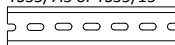
	Fuse	Circuit breaker	
		C16	D16
	T3.15A/H250V	12	24

(9) Mounting Instruction :

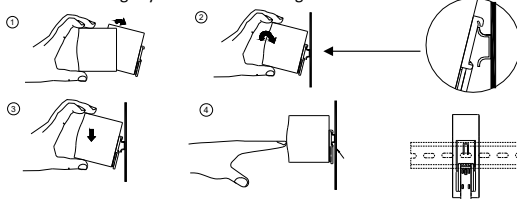
Mount as shown in figure only, with input terminals down, or else sufficient cooling will not be possible.

Admissible DIN rail : TS35/7.5 or TS35/15

For rail fastening :



- (a) Tilt the unit slightly rearwards.
- (b) Fit the unit over top hat rail.
- (c) Slide it downward until it hits the stop.
- (d) Press against the bottom for locking.
- (e) Shake the unit slightly to check the locking action.



()

● **Warning / Caution !!**

“CAUTION : FOR USE IN A CONTROLLED ENVIRONMENT. REFER TO MANUAL FOR ENVIRONMENTAL CONDITION”
 ATTENTION: A UTILISER DANS UN ENVIRONNEMENT CONTRÔLÉ. RÉFÉREZ-VOUS AU MANUEL POUR
 LES CONDITIONS D'ENVIRONNEMENT.

- (1) Risk of electrical shock and energy hazard. All failure should be examined by a qualified technician. Please do not remove the case of the power supply by yourself!
- (2) Risk of electric arcs and electric shock (danger to life). Connecting both the primary and the secondary sides together is not allowed.
- (3) Risk of burn hazard. Do not touch the unit in operation and shortly after disconnection!
- (4) Risk of fire and short circuit. The openings should be protected from foreign objects or dripping liquids.
- (5) Only install the unit in a pollution degree 2 environment (Note.1).
- (6) Please do not install the unit in places with high moisture or near the water.
- (7) The maximum operating temperature is 50°C please do not install the unit in places with high ambient temperature
- (8) Output current and output wattage must not exceed the rated value on its specification.
- (9) Disconnect system from supply voltage:
 Before commencing any installation, maintenance or modification work: Disconnect your system from supply voltage. Make sure that inadvertent connection in circuit will be impossible!

Note.1: Pollution Degree 2 applies where there is only non-conductive pollution that might temporarily become conductive due to occasional condensation. Generally refer to dry, well-ventilated locations, such as control cabinets.

