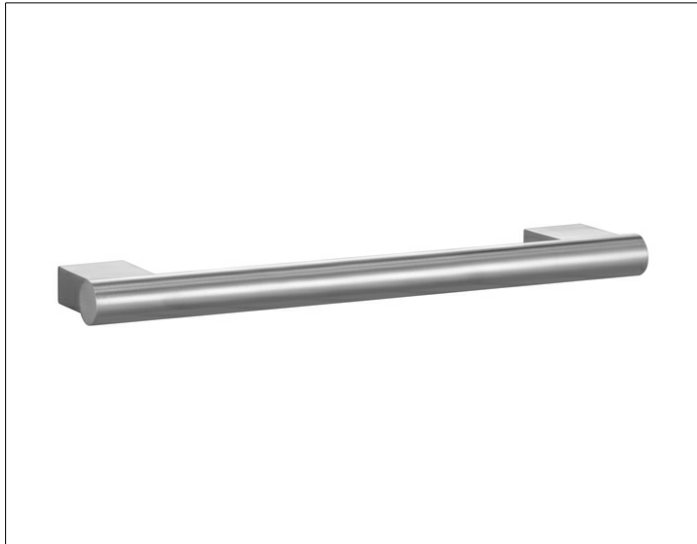


Plan

14907070000 Support rail

PRODUCT



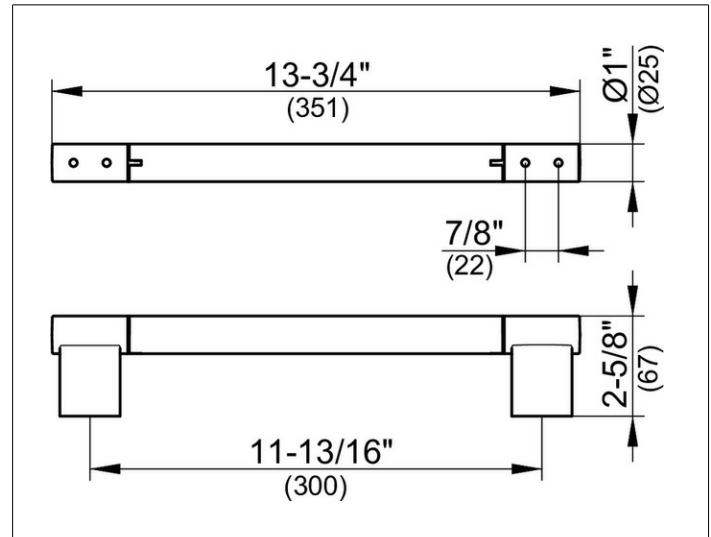
SURFACE

stainless steel

DIMENSION

11,81 "

DRAWING



SPECIFICATIONS

KEUCO PLAN grab rail 14907070000

Stainless steel grab rail, in a stylish yet functional design

Load bearing up to 253 lb, anti static, easy to clean

Centre to centre 11-13/16" with overall width of 13-3/4"

Depth 2-5/8"

The grab rail is fitted with 4 hidden fixing points,
incl. corrosion-free mounting material

Warranty: KEUCO products are covered by a 5-year manufacturer's warranty, in effect from the date of purchase. During this time, proven product defects will be remedied free of charge. Warranty claims must be filed in writing, including a detailed description of the defect immediately after a defect has occurred. For a copy of our detailed product warranty policy, please contact us at office-usa@keuco.com.

Installation: KEUCO products must be installed by a qualified professional in accordance with the respective installation guidelines and any applicable federal / local building codes and regulations.