

Edition 400

11559170000 Shower shelf

PRODUCT



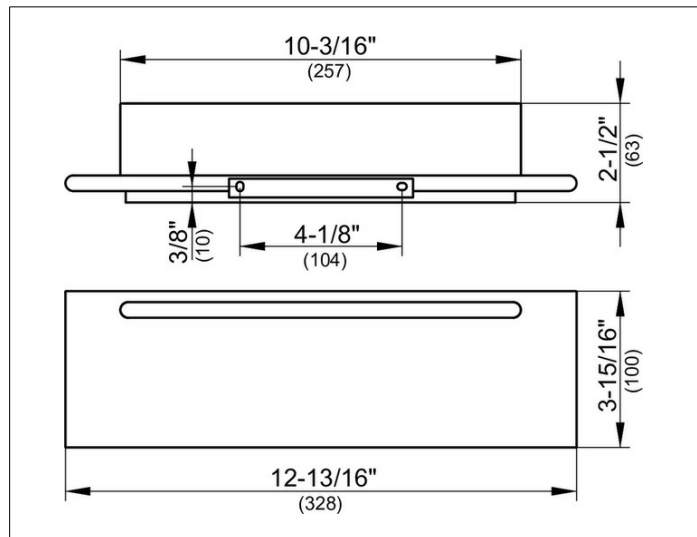
PRODUCT ATTRIBUTES

with integrated squeegee

SURFACE

aluminum silver anodized

DRAWING



SPECIFICATIONS

KEUCO Edition 400 shower shelf
with integrated glass wiper, 11559170000
shower shelf made from solid aluminium ,
aluminium silver-anodized (E6 EV1)/white,
with integrated glass wiper,
wall-mounted, with slightly rounded edges,
width 12-13/16", thickness 11/16", depth 3-15/16",
total height 2-1/2",
the shower shelf is fitted concealed,
delivery includes anti-corrosion fixings

Warranty: KEUCO products are covered by a 5-year manufacturer's warranty, in effect from the date of purchase. During this time, proven product defects will be remedied free of charge. Warranty claims must be filed in writing, including a detailed description of the defect immediately after a defect has occurred. For a copy of our detailed product warranty policy, please contact us at office-usa@keuco.com.

Installation: KEUCO products must be installed by a qualified professional in accordance with the respective installation guidelines and any applicable federal / local building codes and regulations.