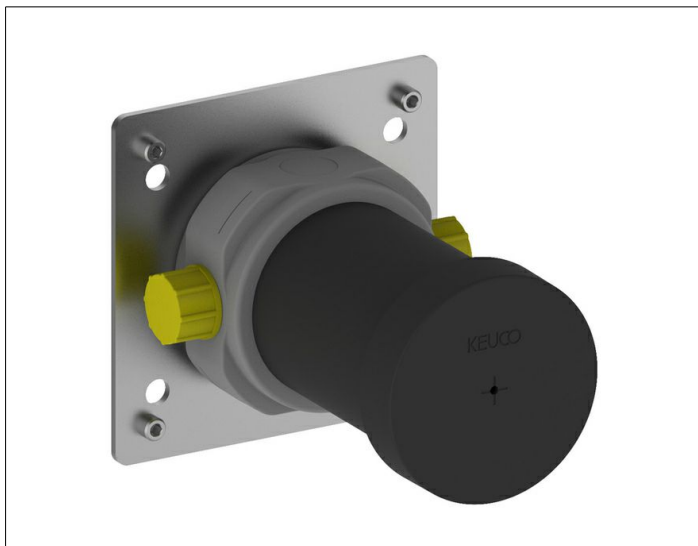


IXMO

59556000170 Installation unit for 2-way diverter valve with wall outlet for shower hose DN 15

PRODUCT



DRAWING



PRODUCT ATTRIBUTES

Rough part for recessed installation
installation depth 80 - 110 mm

SPECIFICATIONS

KEUCO IXMO installation unit
for 2-way diverter valve
with wall outlet for shower hose, DN 15, 59556000170
sound-insulated rough part
made of low-dezincifying brass,
for recessed installation,
freely positionable,
installation depth 80 mm – 110 mm,
base plate with adjusting screws
for optimal positioning,
Connection G 1/2 inch with colour marking,
Note: Suitable for article no:
59556010101, 59556010102, 59556010201, 59556010202
59557010101, 59557010102, 59557010201, 59557010202

Warranty: KEUCO products are covered by a 5-year manufacturer's warranty, in effect from the date of purchase. During this time, proven product defects will be remedied free of charge. Warranty claims must be filed in writing, including a detailed description of the defect immediately after a defect has occurred. For a copy of our detailed product warranty policy, please contact us at office-usa@keuco.com.

Installation: KEUCO products must be installed by a qualified professional in accordance with the respective installation guidelines and any applicable federal / local building codes and regulations.